

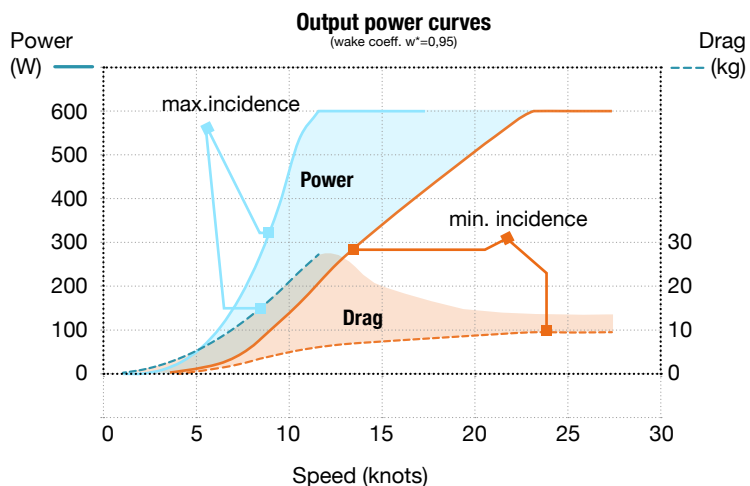
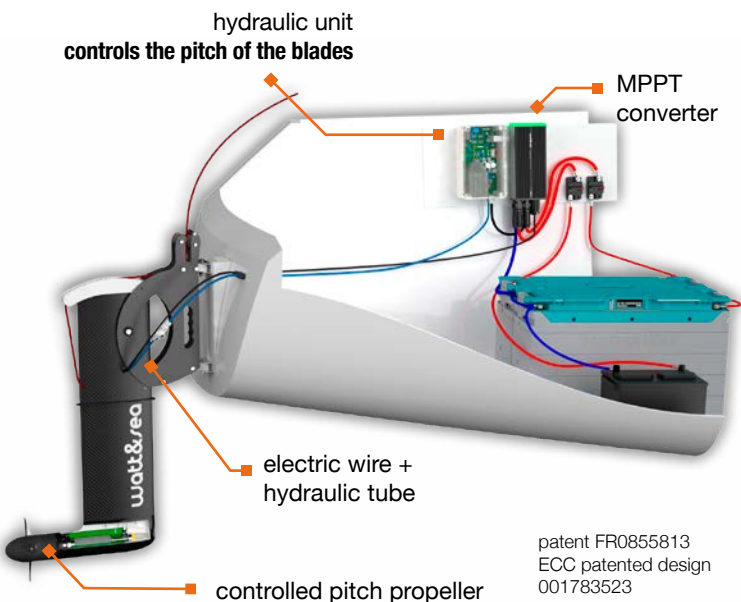


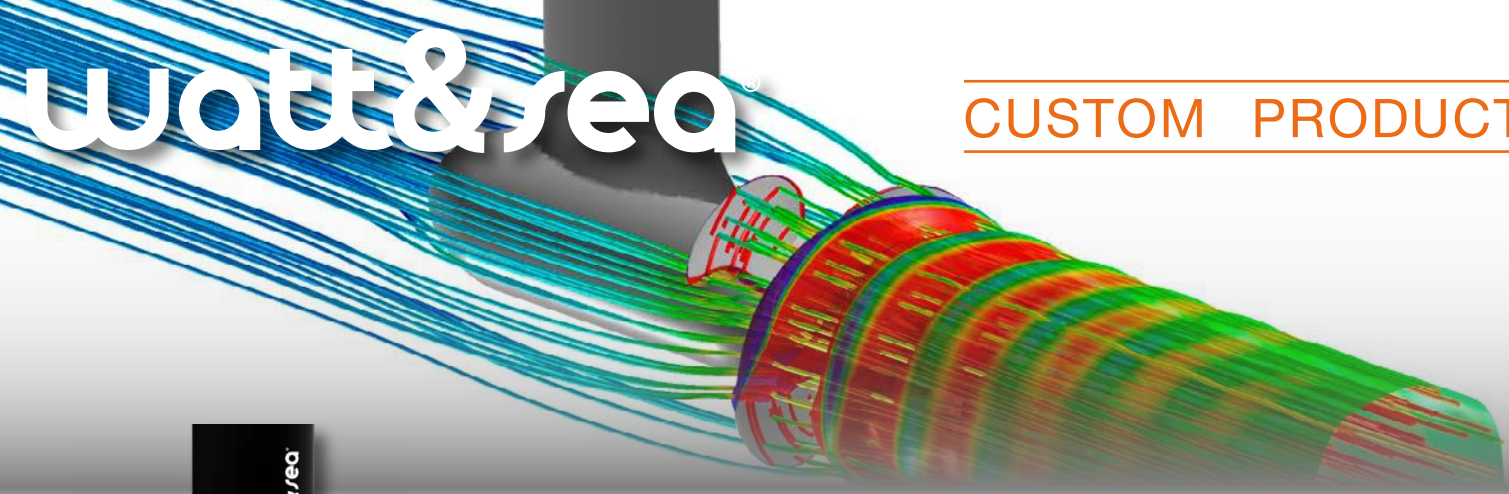
watt&sea RACING hydrogenerators have radically changed energy management on board and have become essential pieces of equipment in offshore races. They are equipped with a controlled pitch propeller, functioning electronically with an independent system. The drag is minimal and the energy output is optimal on a speed range from 5 to 30 knots.

Available in two versions : Aluminium Racing (PK-610-600-PV) and Carbon Racing (PK-610-600-PV/CAR)

### PACK CHARACTERISTICS

Charging voltage	12 or 24 V autodetected	
Maximum using speed	30 knots	
Leg length	610 mm	
Overall length with bracket	920 mm	
3-phases wire length	4 m (13 ft)	
Compatible batteries	All incl. Lithium	
Pack contents	1 hydrogenerator 1 converter 1 hydraulic unit Mounting accessories	
Hydrogenerator weight	7,7 kg	carbon
	8,2 kg	aluminium
Converter weight	1,5 kg	
Hydraulic pump weight	1,0 kg	
Warranty	2 years	





Thanks to its expertise in hydrogeneration, watt&sea is the ideal partner for the development of your specific projects :

- Hull integration
- Hydrogenerator adaptation to other conditions : very low or very high speeds
- Propulsor design for specific applications ( watt&sea is the official supplier of the Hydrocontest event)

### • Hull integration



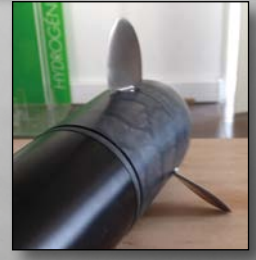
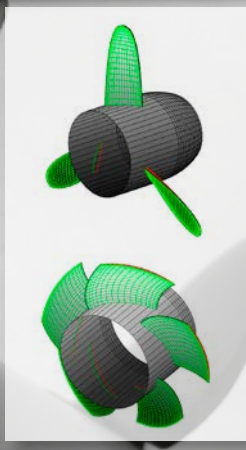
Studies and exchanges with architects and shipyards for optimal product integration

### • Blades design by BEM analysis

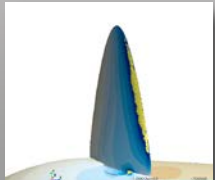
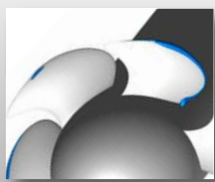
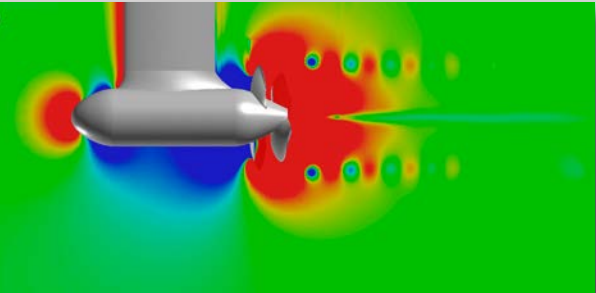
Propeller design with specific BEM analysis tools developed for hydrogeneration in open water or nozzle conditions.

As a result watt&sea products can be adapted to other working conditions : maxi-trimarans, multi-50, river hydrogeneration... etc.

Rapid prototyping of blades in aluminium, SS316, plastic...



### • CFD studies management



Project management in collaboration with CFD-specialized subcontractors.

CFD shapes checking : prediction of the drag, cavitation, geometry optimisation ...etc.